



**AUSTRALIAN
CALIBRATING
SERVICES**
A Trescal company

126 Oxford Street, Collingwood
PO Box 1174, Collingwood, Vic 3066, Australia
Tel: +61-3-94175688 Fax: +61-3-94171578
Web: www.auscal.com.au
Email: acs@auscal.com.au
A.B.N. 33 623 153 736



TruForce

Hydraulic Compression Testing Machine | TF-CTM

TF-CTM Series Static Hydraulic Compression Testing Machine Up to 20MN



Model: TF-CTM5MN

TruForce

Hydraulic Compression Testing Machine | TF-CTM

The Australian Calibrating Services (ACS) TF-CTM Series TruForce Static Hydraulic Testing Systems provide complete testing solutions to satisfy the needs of Civil Engineering & Geotechnical Researches, as well as advanced materials testings. The custom design load frames are ideal for Universities with different testing applications and projects.

Features

- Adjustable crosshead providing 2020mm of testing space
- High-stiffness, precision-aligned load frame
- Hydraulic actuator and load cell in lower base
- All ball screws are protected by bellows make it perfect for concrete specimen testings
- Lower compression platen is movable horizontally for ease of specimen installation. The upper compression platen comes with spherical seat
- High precision load cell
- Full-enclosed protection shield and the doors fitted with interlocks to provide safety during testing
- High performance Doli Controller with expansion options for future testings
- 80mm usable actuator stroke
- Low noise hydraulic pumping unit suitable for laboratory environment
- Professional test software is use to use and provides a full library of international testing standards, such as ASTM, ISO, AS standard, etc.



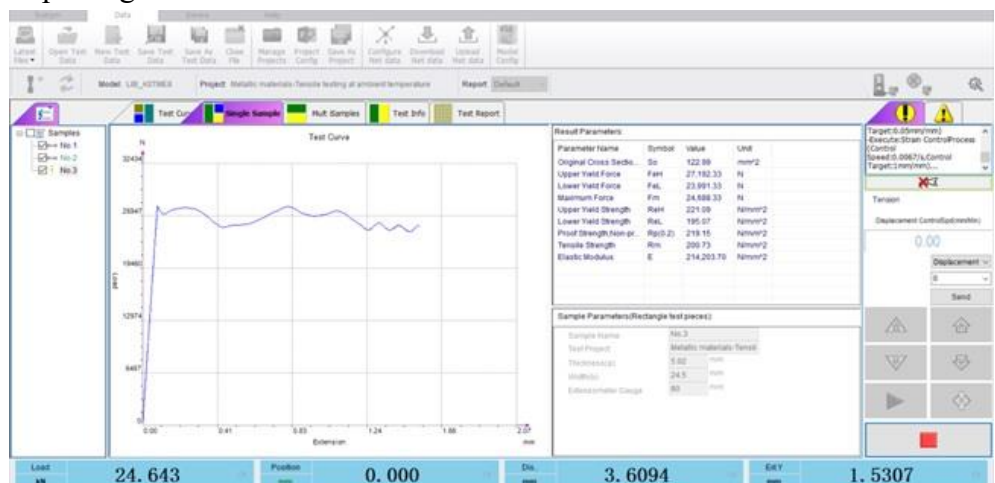
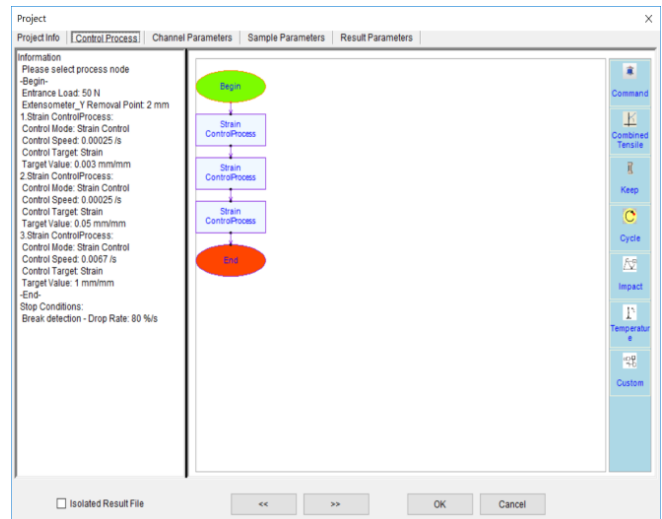
Doli Controller

- High Performance Servocontroller
- 40 bit Servo loop update
- Data acquisition up to 4 kHz
- Position Encoder, Load, and Strain signal conditioners with 32 bit analog data conversion
- Additional Channels, Position Encoder, Strain, 2 Hi Level (+/-10V)
- Auto calibration on all strain channels
- 8 Channels digital output (control bits) & 8 Channels digital input (sense bits)
- 2 - 16 bit Servo/ Daq Output
- Ethernet interface

TestMaster Software

Professional Testmaster Software provides the easiest way to set up and run tests:

- Easy to create new templates
- Multi Language
- Fully library of international testing standards are available
- Intuitive test flow edit
- Reports can be created in the precise format you desire.
- Data can be exported to a variety of different formats.
- Customize the test setup using a standard as a template
- Multiple graph types can be used for each test
- Recall function enabling users to add key data perhaps not available, or missed, pre-test.



5MN Load frame specifications

Model	TF-CTM5MN
Capacity	5,000kN
Force Range	1% - 100%
Force Accuracy	±1% of reading
Displacement accuracy	±1% of reading
Top Crosshead moving speed	0 – 300mm/min
Actuator Stroke	80mm
Actuator speed	0 – 50mm/min
Compression platen	600mm x 600mm (can be customize)
Daylight Opening (Maximum between top and bottom compression platens)	2020mm
Space between columns	795mm
Load frame dimension	1800 x 2400 x 4600 (mm)
Power Supply	3 phases, 415V/50Hz, 15kW
Load Frame Weight	11,200kg
Hydraulic Oil Type	DTE-25 Hydraulic Oil or similar: 550L