

TRUFORCE DA SOFTWARE

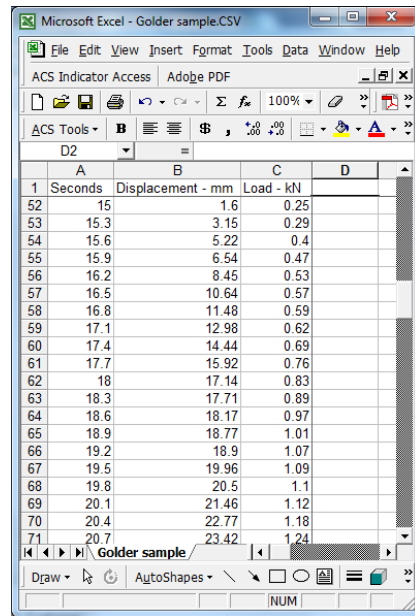
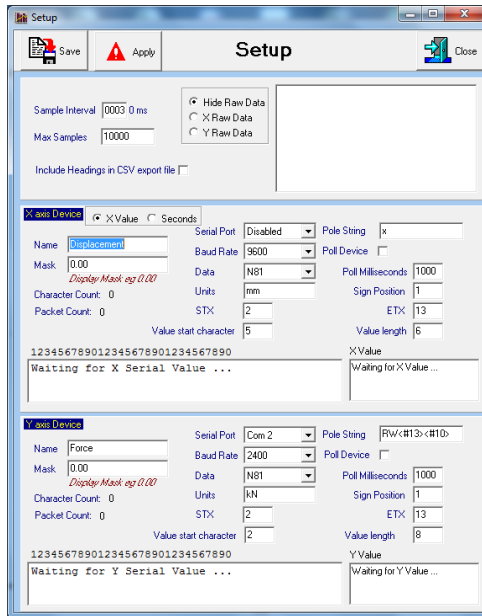
Truforce allows up to 3 channels for data acquisition; 2 Serial Inputs and 1 fixed Internal Time based channel. Channels are Load, Time and Displacement
Example could be for CBR, UCS tests, captures Load and penetration.
Functionality available to input single analogue channel for strain and force and calculate 0.2%Rp and 0.5%Rt Proof stress values. This replaces analogue chart recorders

Truforce will operate on all Window Operating Systems. Data is captured in a time base interval which is user defined up to a maximum of 50,000 data points. Selectable sample speeds dependant on Indicator functionality

A real time graph is displayed during the test. After test completion the data can be saved in a CSV file format which later can be further analysed using Excel or some other type of spreadsheet program.

Sample setup function for Load & Displacement

Raw data saved as a *.csv file



Real Time graph displays X and Y axis

