

Product Information

Rockwell hardness tester ZHR4045/4150/8150



Hardness tester ZHR4150AK

Hardness tester ZHR8150SK

Range of application

The hardness testers of the ZHR product family cover the following methods:

- **Rockwell methods (ZHR4150)**
according to ISO 6508 and ASTM E 18
Pre-load: 10 kg. Test load: 60, 100, 150 kg
Scales: A B C D E F G H K L M P R S V
- **Superficial Rockwell (ZHR4045)**
according to ISO 6508 and ASTM E 18
Pre-load: 3 kg. Test load: 15, 30, 45 kg
Scales: N T W X Y
- **Combined Rockwell (ZHR8150)**
according to ISO 6508 and ASTM E 18
Pre-load: 3, 10 kg.
Test load: 15, 30, 45, 60, 100, 150 kg
Scales: A B C D E F G H K L M N P R S T V W X Y
- **Rockwell Plastics (LKP)**
according to ISO 2039-2 and ASTM D785 (A & B)

Special characteristics

- Friction-free dead-weights
- Nose mounted indenter allows access to awkward to reach test points
- Extended range of applications by means of nose mounted indenter
- Fully automatic testing cycle and automatic conversion to alternative scales eliminates operator influence on the test results
- High level of test result reproducibility
- Robust construction with a play free screw spindle running on ball-bearings
- Workspace up to 250 mm high enables large workpieces to be tested
- Visual and audible signals when specified tolerance exceeded and during pre-load setting
- Full range of standard accessories
- RS232 interface as standard
- Special purpose component fixtures to suit individual customer requirements

Product Information

Rockwell hardness tester ZHR4045/4150/8150

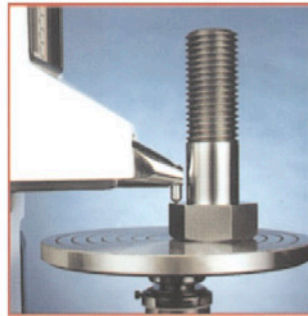
Indenter fixturing enables hardness tests on measuring locations that are difficult to access to:



Measuring of the inner contact surface of a cardan shaft driver



Measuring of the inner contact surface of a bearing's outer ring with 23 mm diameter



Measuring of the contact surface of a high-strength screw



Preparation to measure inside of a gear box part

Further features and technical data

Loading control (application, holding, and removal)	automatic
Resolution	at least 0.1 digits (e. g. 62.1 HRC)
Pre-load setting	with optical and acoustic support
Starting test action	automatically or manually
Test area (height x depth)	250 x 150 mm (standard)
Dimensions (height x width x depth)	379 x 150 mm (extended) (note: without tooling)
Weight	800 x 260 x 670 mm (extended h = 929 mm)
Power supply	approx. 90 kg
	120 or 240 V (50 - 60 Hz)

Accessories for all Zwick ZHR hardness testers

Standard accessories

- 1 Diamond indenter
- 1 Ball indenter 1/16"
- 1 70 mm diameter flat anvil
- 1 User manual
- 1 UKAS test certificate

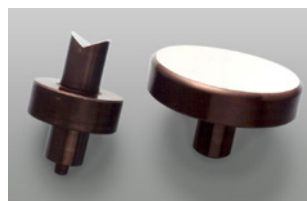
Optional accessories

	Item Number
Spare balls 1/16"	2111183
6 mm spot and vee anvil	2111156
Hardness test blocks	
Extended length	2111169

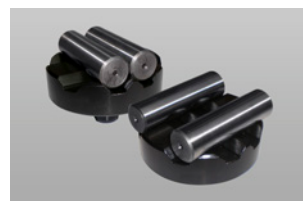
A full range of optional accessories is available, please see our brochure.



Indenter



Support tables



Support tables for round specimens



Hardness comparison plate with certificate

Product Information

Rockwell hardness tester ZHR4045/4150/8150

Operating concepts



AK + BK

One button operation
Equipment for
standardised Rockwell
measuring



LK

Membrane key pad
• Tolerance limits
• Average value
• Conversion
• Correction of curves



SK

Touchscreen, standard
Additional:
• Automatic load
change
• Extended statistics
• Monitoring minimum
material thickness



TK

Touchscreen, advanced
Additional:
• Automatic load change
• Graphical possibilities
of evaluation
• Measurement series
memory

Features		AK	BK	LK	SK	TK
Data calculation	Average value (display)	•	•	•	•	•
	Average value and variance (diagram)					•
	Test series save to a file					•
	Histogram (display + output)				•	•
	SPC characteristic numbers (display + output)				•	•
	Standard deviation (display + output)				•	•
	Go / No go evaluation (display + output)			•	•	•
Automatic display of the selected hardness method				•	•	•
Automatic conversion (Vickers, Brinell, Rockwell, Knoop, tensile strength)				•	•	•
Automatic correction of curves (diameter = 3 – 20 mm)				•	•	•
Check minimum material thickness					•	•
Automatic load change					•	•
Adjustable dwell time (1 ... 50 sec)				•	•	•
Single RS232 C connection		•	•	•		
Twin RS232 C connection					•	•
Internal clock					•	•
Specimen clamp (optional, factory-fitted)		•	•	•	•	•
Motorised leadscrew (optional, factory-fitted)					•	•

Test software testXpert® III Measurement value logging

Description	Item number
testXpert III - Standard Test Program	1035143
- Data Communication for Hardness tester	
- Via RS232 interface	
testXpert III - Master Test Program	1035512
- Data Communication for Hardness tester	
- Via RS232 interface	

Measured values determined on the hardness tester are transferred to testXpert II via the serial port for logging, data archiving and processing.



Product Information

Rockwell hardness tester ZHR4045/4150/8150

Rockwell hardness testers Zwick/ZHR AK + BK

Type	Item number
ZHR4045AK / BK	2111112 / 2111114
ZHR4150AK / BK	2111113 / 2111115
ZHR8150BK	2111116

Additional features

- Test load selection via side-mounted switch
- With 4-digit display, toggle switch for indenter selection (diamond or ball) and mean value display
- AK equipped with springs, BK with dead-weights



Rockwell hardness testers Zwick/ZHR LK

Type	Item number
ZHR4045LK	2111117
ZHR4150LK / LKP	2111118 / 2111119
ZHR8150LK	2111120

Additional features

- Load application via friction-free dead-weights for long-term stability
- Line display with test configuration
- Adjustable functions: tolerances, mean value, conversion, curvature correction



Rockwell hardness testers Zwick/ZHR SK + TK

Type	Item number
ZHR4045SK / TK	2111121 / 2111124
ZHR4150SK / TK	2111122 / 2111125
ZHR8150SK / TK	2111123 / 2111126

Additional features

- Load application via friction-free dead-weights for long-term stability
- Touch-screen display for test configuration and selection of test load
- Automatic test-load change
- Expanded functions: tolerances, mean value, conversion, curvature correction, minimum thickness monitoring, standard deviation, histogram plus many others

